



SPRINGTREE

MEDIA GROUP

HD202 RGBWW LED Ellipsoidal



USER MANUAL AND INSTALLATION GUIDE

Table of Contents

1. Before You Begin

What is included.....	3
Safety precautions.....	3

2. Product Information

Description.....	4
Features.....	4

3. Installation

Power supply.....	5
Mounting.....	5
Adjusting the shutters.....	6
Using a gobo.....	6
Using a gel or filter.....	6
DMX linking.....	7

4. Operation

Menu buttons.....	7
Operating modes.....	7
LED display menu.....	8
DMX Modes.....	8

5. Maintenance

Cleaning your ellipsoidal.....	10
--------------------------------	----

6. Technical Specifications

Troubleshooting.....	10
Dimensions.....	11
Warranty.....	12
Contact us.....	12

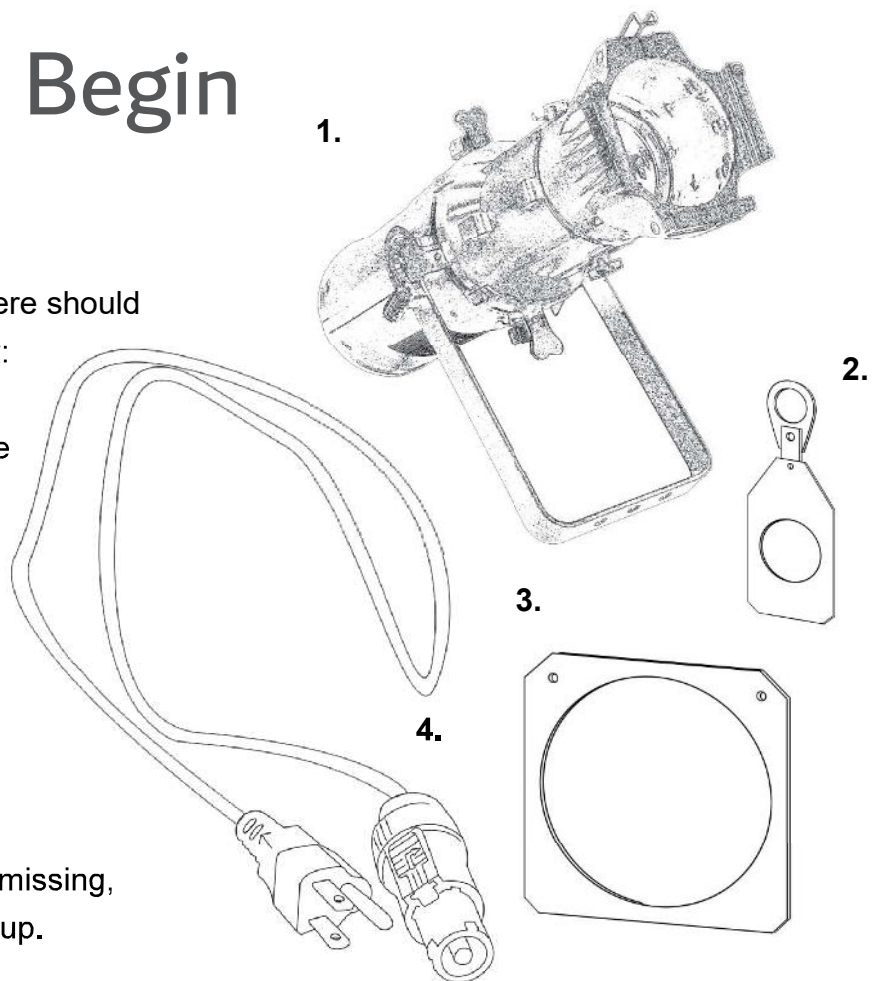
Before You Begin

What is included

When you open your package, there should be four items inside of the box:

1. One LED Ellipsoidal light Engine (lens sold separately)
2. One gobo holder
3. One gel frame
4. One Powercon power cord

*If any of these items is damaged or missing, please contact Springtree Media Group.



Safety Precautions

- To reduce the risk of electrical shock or fire, do not expose this unit to moisture.
- Be sure that the local power outlet matches that of the required voltage for your unit
- Do not attempt to operate this unit if the power cord has been frayed or broken. Do not attempt to remove or break off the ground prong from the electrical cord. This prong is used to reduce the risk of electrical shock and fire in case of an internal short.
- Disconnect from main power before making any type of connection.
- Do not remove the cover under any conditions. There are no user serviceable parts inside.
- Never plug this unit into a dimmer pack.
- Always be sure to mount this unit in an area that will allow proper ventilation. Allow about 6" between this device and a wall.
- This fixture is intended for indoor use ONLY.
- During long periods of non-use disconnect the units main power.
- Always mount this unit in a safe and stable manner.
- Keep this manual for as long as you own this product!

Product Information



Description

The Springtree HD202RGBWW LED Ellipsoidal is a powerful fixture suitable for theatrical performance halls, schools and houses of worship. With this versatile instrument, you can get many different uses from one single fixture. You can control the size, shape, edge and intensity of the beam of light.

Features

- 200W RGBWW LED
- Digital Display
- Interchangeable 19°, 26° or 36° lenses (sold separately)
- Lightweight 13lb body
- Three pin XLR jacks
- 7 channel DMX
- Gobo holder
- Gel frame
- 4 shutters for controlled spotlighting
- Linking Powercon IN/OUT



Installation

Power Supply

Before plugging your unit in, be sure the source voltage in your area matches the voltage required for your lighting setup. Every unit has a power supply capable of 120V. Because line voltage may vary from venue to venue, you should be sure your unit voltage matches the wall outlet voltage before attempting to operate your unit.

* Always connect this product to a protected circuit with an appropriate electrical ground to avoid the risk of electrocution or fire.

Mounting

When mounting your ellipsoidal, make sure there is adequate room for ventilation. Operating in an insufficiently ventilated room can lead to an overheating of the device and may cause serious accidents. Keep a minimum distance of 6 inches around and above the device. Before deciding on a location, mount in a way that it will be easy to access the unit for maintenance and addressing.

Adjusting the shutters

To adjust the width and shape of the beam, simply push or pull any of the four shutters located around the body of the ellipsoidal.

Using a gobo

If you want to shape your light with a gobo, insert it into the included gobo holder so that it is visible through the circular hole. In order for your gobo to be projected correctly, it should be inserted upside down and flipped. After you've inserted your gobo into the holder, screw the holder shut so that the gobo is secure and does not move. Slide the holder into the slot located in front of the top shutter. When removing the gobo, make sure to let it cool before handling.



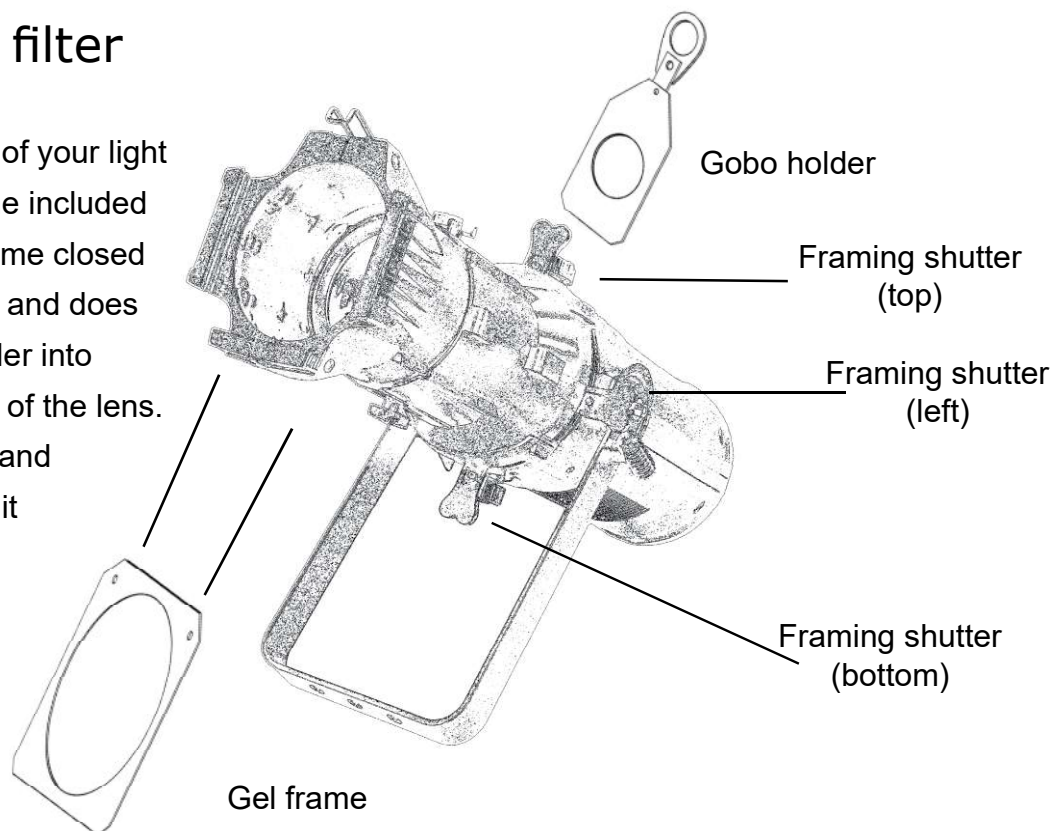
To look like this



Insert like this

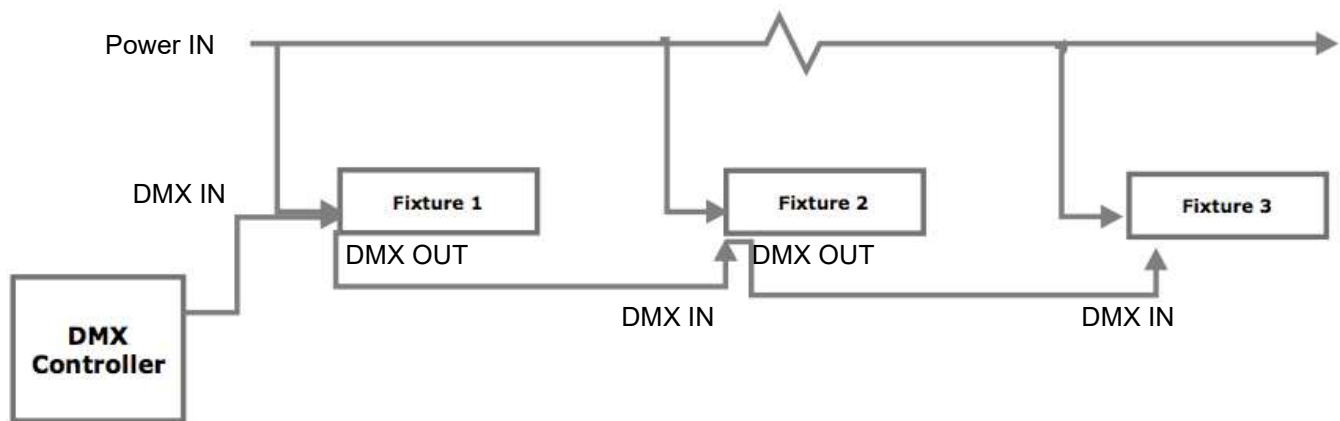
Using a gel or filter

To alter the color of your light beam insert a gel into the included gel frame. Screw the frame closed so that the gel is secure and does not move. Slide the holder into the slots located in front of the lens. When removing the gel and holder, make sure to let it cool before handling.



DMX linking

An LED Ellipsoidal can be connected to a DMX controller by a 3-pin DMX cable, allowing total control over one or more lights. To do this, connect a DMX cable from the DMX-input (labeled DMX IN) on your lighting unit to the DMX-output of the controller. Connect a second light via its DMX-input to the first unit's DMX-output (labeled DMX OUT) to control and synchronize multiple lighting units at once.



Operation

Menu Buttons

There are buttons on the back of this unit: MENU, UP, DOWN and ENTER. Normally the LED will display the current DMX address code of the fixture. Press MENU to choose the desired function and press ENTER to confirm.

Operating modes

This light can operate in 2 modes:

- **DMX control mode-** this function will allow you to control each individual unit with a standard DMX 512 controller
- **Stand Alone-** each ellipsoidal will operate in a manual stand alone mode. No DMX wire necessary.

Operation - Menu/DMX Traits

Menu		
Display	Description	Range
A001	DMX address	001 - 512
SL 1	Slave	1 - 3
AU00	Auto Programs	00 - 99 (Slow - Fast)
Sd00	Sound Active	00 - 99 (Slow - Fast)
FA00	Auto Fade	00 - 99 (Slow - Fast)
F ,00	Static Color	00 - 14
St00	Strobe	00 - 99 (Slow - Fast)
r255	User Color (red)	000 - 255
G255	User Color (green)	000 - 255
b255	User Color (blue)	000 - 255
U255	User Color (warm white)	000 - 255

DMX (7 Channels)		
1	Red	000 - 255
2	Green	000 - 255
3	Blue	000 - 255
4	Warm White	000 - 255
5	Dimmer	000 - 255
6	Strobe	000 - 255
7	Color Macro	000 - 255

Maintenance

Cleaning your ellipsoidal

Due to fog residue, smoke, and dust cleaning the internal and external optical lenses must be carried out periodically to optimize light output.

1. Use normal glass cleaner and a soft cloth to wipe off the outside casing.
2. Clean the external optics with glass cleaner and a soft cloth every 20 days.
3. Always be sure to dry all parts completely before plugging the unit back in.

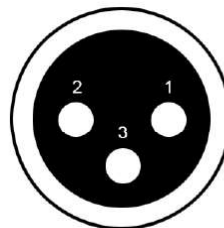
*Cleaning frequency depends on the environment in which the unit operates (i.e. smoke, fog residue, dust, dew).

Troubleshooting

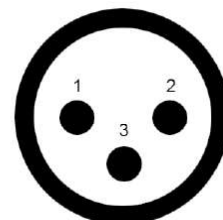
Listed below are a few common problems that you may encounter when using this product:

Unit not responding to DMX:

1. Check that the DMX cables are connected properly and are wired correctly.
2. Check that all cables are connected to the right connectors; it does matter which way the inputs and outputs are connected.



DMX output

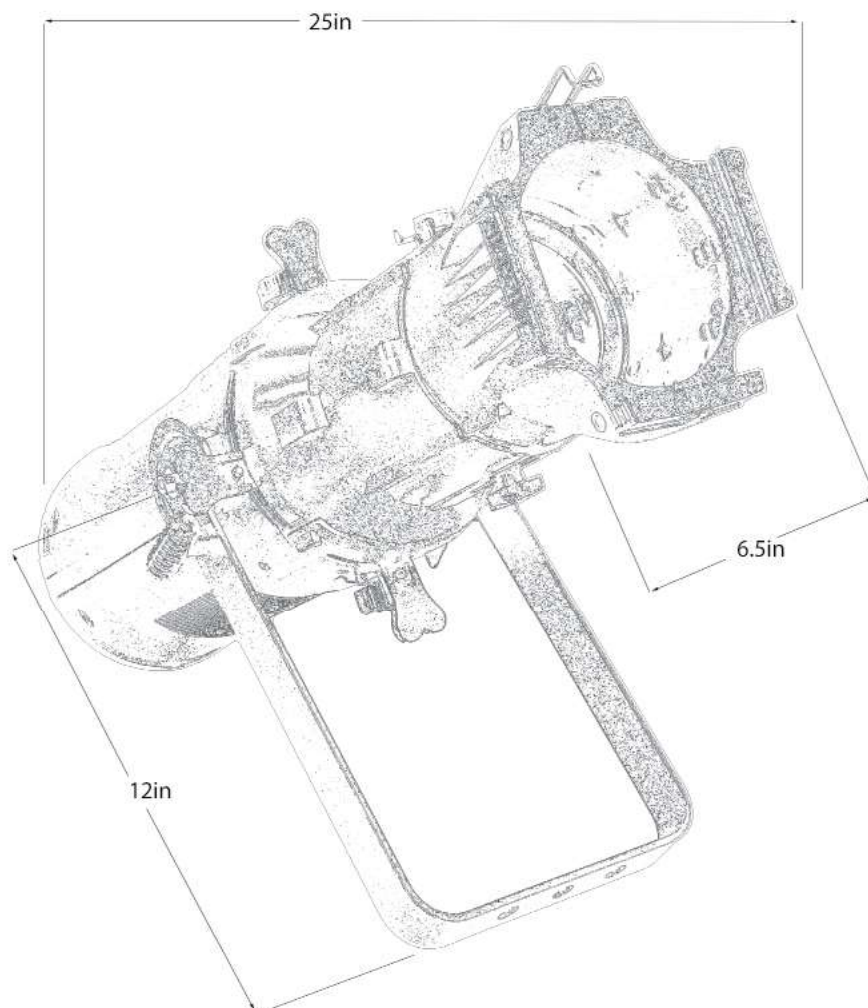


DMX input

Technical Specifications

- Power Supply: AC120V, 50/60Hz
- Power Consumption: Max. 200W
- LED: RGBWW COB
- Electronic Strobe: 1-20 flash/s
- Display: 4-digit LED
- Data In/Out: XLR 3Pin
- Cooling: heat sink plus 2 fans
- Housing: Plastic
- Housing Color: Black
- IP Rating: IP20
- Environment Temp: -30°C-50°C
- Dimensions(mm): L25in x W6.5in
- Net Weight: 13lbs

Dimensions:



WARRANTY

1st YEAR - Parts and labor. Advanced replacement - First 90 days with shipping covered by Springtree Media.

2nd YEAR - Repair/ Replace Springtree discretion. Return shipping covered by customer.

Contact Us!

Springtree Media Group would like to thank you for choosing our company for your lighting needs! If you have any questions or concerns, please contact us.



Office hours:

Monday-Friday, 8:30 AM to
5:00 PM CT

Telephone:

(615) 599-1505

E-mail:

sales@springtree.net

Website:

www.springtree.net